

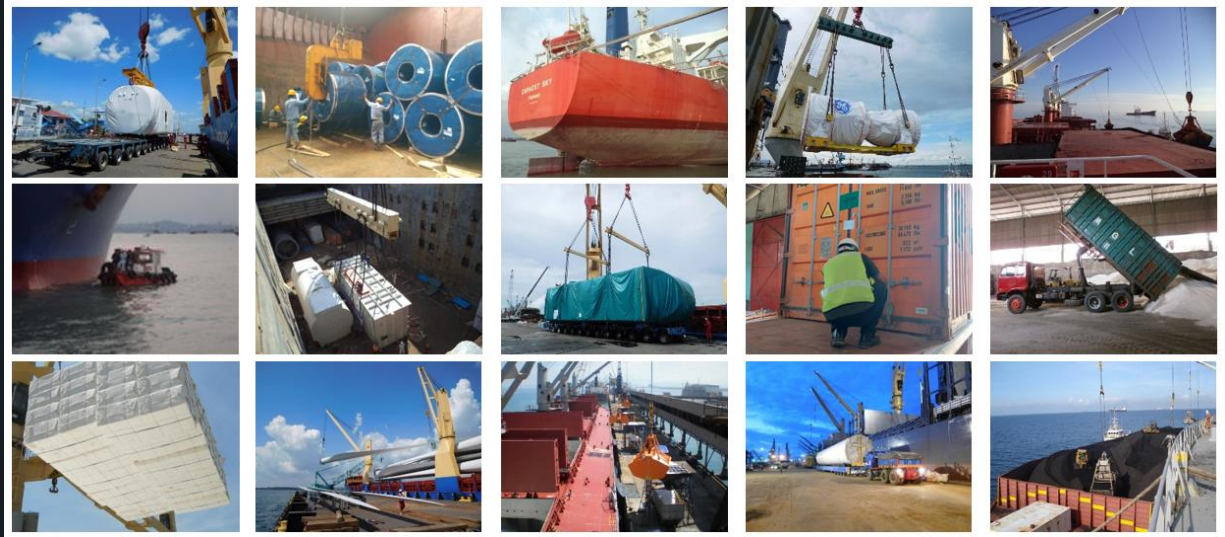


# **INTRODUCING SURVEYOR SAMUDRA**



**MARINE AND CARGO SURVEYORS  
SUPERVISION AND INVESTIGATION  
INSPECTION AND CERTIFICATION**

## THE COMPANY



PT. SURVEYOR SAMUDRA or SAMUDRA is the private company was established on 2005 by Deed of Establishment and has licensed to do it services by Government of Indonesia under the Department of Trade (Departemen Perdagangan RI). As well, we have registered at Trade and Industry Chambers (KADIN), and Asosiasi Independent Surveyor Indonesia (AISII).

The main activities of the company are marine surveying and cargo inspection services. The company employs experienced surveyors who have had many years of experience at the surveying field. They have served on vessels of well-known International, and Indonesian shipping companies as well as having several years of experience in the surveying/inspection field such as marine, cargo, and petroleum products.



# VISION | MISSION | OBJECTIVES

## Our Vision

To be the best marine cargo surveyors' company in Indonesia that provided the independent, integrity, and professional services.

## Our Mission

To continuously deliver company value by:

- Supplying the quality survey service that satisfy the needs of our customers
- Constantly achieving survey excellence
- Conducting safe survey and environmentally sustainable
- Innovative and results-oriented team inspired to deliver quality service

## Our Objectives

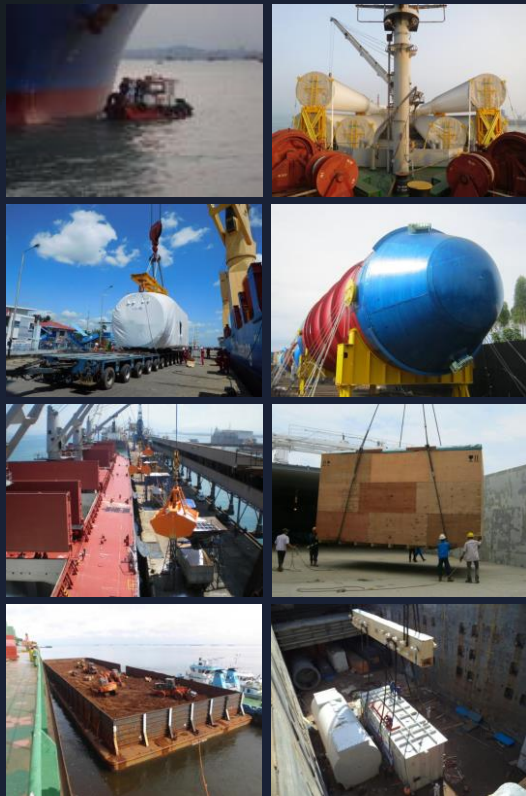
We are committed to deliver quality in business by focusing on the following:

- Independent, integrity, and professionalism
- Realize the potential of our people
- Meet our customer requirements for marine surveyor Indonesia
- Deliver continuous safety health and environmentally friendly
- Benefit our company



## SURVEY SERVICES

Since established the company, we have served the principals and customers with progressive area from local to worldwide. They have requested us to protecting and witnessing of their interests both ship and cargoes. We have experience in marine and cargo surveys field and able to perform the following survey services.



### Marine Survey

- ✓ Draft Survey, and Calculation of Light and Loaded Displacement
- ✓ On Hire / Off Hire Survey Inspection of Ships (Prior and After Charter)
- ✓ Bunker Quantity Survey
- ✓ Cleanliness of Cargo Hold Survey
- ✓ Damage Survey, Caused and Extend
- ✓ Ship Condition Survey

### Cargo Survey

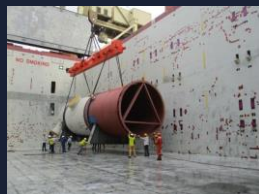
- ✓ Loading Survey
- ✓ Discharging Survey
- ✓ Measuring and Weighing
- ✓ Tally Survey
- ✓ Hatch Survey/Opening of Hatches
- ✓ Condition of Goods, Caused and Extend of Damage Cargo
- ✓ Pre shipment Inspection



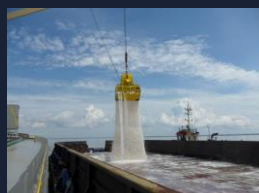
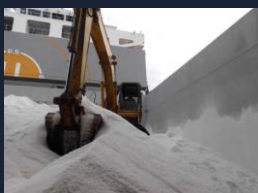


## PORTFOLIO

### Project cargo, heavy lift, & measurement cargoes



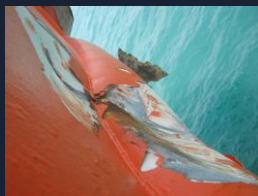
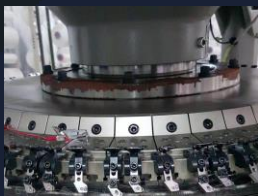
### Bulk supervision & cargo quality



## Marine survey & ship condition



## Insurance matters & damage survey



## Container survey & Lashing on flat rack







## FIND US

If you need the service of marine surveyor in Indonesia, our staffs and operations are willing to help you knowing more details about company and services.

### Head Office:

Jl. Upaya No. 15, Tanjung Priok,

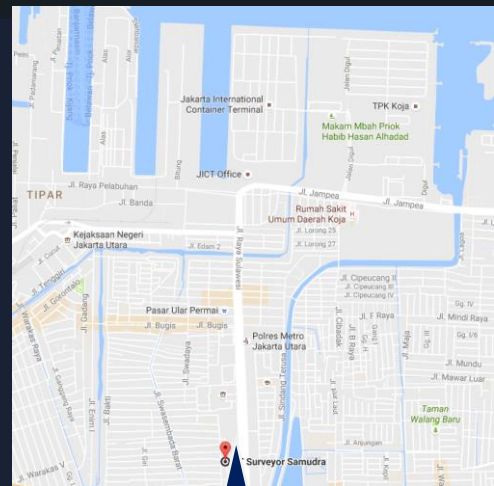
Jakarta 14320 - Indonesia

Line 1. +62-21-2946-7983

Line 2. +62-21-2946-7984

Email. [op@surveyorsamudra.com](mailto:op@surveyorsamudra.com)

Website. <https://surveyorsamudra.com>



**Our representative office available at Belawan, Perawang, Lampung, Surabaya, and Makassar are set to reach entire Indonesia Ports.**



## ASSURANCE

We are committing to independently protect the rights of our clients and/or principals with impartial survey conducted in the line of *No Conflict of Interest* among parties' concerns. Kindly read our terms of service for service measures.

We are looking forward to hearing the good news from you.

Sincerely,

Business Development





## TERMS OF SERVICE

- 1.) "Primary" persons or bodies that use service or rely upon SAMUDRA survey reports or in sequence attached on them should be understand all the details of the appointment under with their issued.
- 2.) "Survey" performs and/or observes the intended subject to generate survey report or information as principals instructed specifically or which is refers to standard.
- 3.) "Standard" the surveys are conducted to industry standard, and/or the relevant trade custom, usage, or practices, and/or such methods as the company shall consider appropriate on technical, operational, and/or financial grounds.
- 4.) "Service" the surveys for quantity and quality in accordance with agreement with and instruction from its principal.
- 5.) "Principal" persons or bodies whom are instructed to perform the survey.
- 6.) "Information" in the course of performing such services, SAMUDRA develops information
- 7.) "Survey document" the information is produces survey document such as report and certificate. The report and certificate will be signed with authorized signature that assigned by SAMUDRA especially for manager and superior.
- 8.) "Report limitation" the original and copies of survey reports will be submitted to principal only. The survey reports are issued exclusively for the principal interests and furnish for information they specifically requested.
- 9.) "Survey fee" the payment amount agreed between principal and SAMUDRA to perform the survey. The fee is subject to change at any time, in case the required services exceeds than the normal circumstances.
- 10.) "Payment" payments of survey fee are net as terms agreed with principal. For not paid fee are collected comprehensively by legal representatives or by a notary. The cost of notary or agents in efforts to collect such payment shall be born to principal's account.
- 11.) "Survey cancellation" the principal cancelled for service shall be subject to payment for all services provided and disbursement sustained by SAMUDRA.
- 12.) "Principal obligation" (a) the order and instructions are given in due time and/or in any special event is not later than 48 hours prior to the required services to be performed; (b) obtain all necessary access for SAMUDRA to the places of survey services and take all necessary steps to eliminate any hindrance to, or disturbance in, the performance of the services; (c) provide, if required, any special equipment and personnel necessary for the performance of the services; (d) ensure that all necessary safety measures at sites and places during the performance of services; (e) notify SAMUDRA in advance of any known hazards or dangers, actual or potential, associated with required services; (f) fully exercise all its rights and discharge all its liabilities under any relevant sales or other contract with a third party and at law.
- 13.) "Liability" SAMUDRA liable for any alleges of losses and/or any other defects caused by the disappointment of workforces shall be limited to the total amount paid by the principal for doing the work. Any principals seeking greater protection from loss or damage than as aforesaid should be acquired insurance properly.
- 14.) "Law & Jurisdiction" by accommodating, using or relying upon such survey reports or in sequences the principals for whom the service is performed, and any persons or bodies who relies upon the survey report or in sequences, concur to the foresaid terms and conditions. Any agreements with SAMUDRA shall be governed by the laws of government of Republic of Indonesia.
- 15.) "Revision" there is no verbally allowed to amend, modify or revise any of the abovementioned terms and conditions. Any revisions should be in written and signed by an officer of SAMUDRA.
- 16.) "Last revision" the 14th revision issued 04/10/2022 by SAMUDRA.